

# Garland Ranch Regional Park

## Regulations

Visitors are responsible for knowing and complying with District ordinances. Following are some basic regulations that will help to ensure a safe and enjoyable visit.

**Hours:** Open year round from sunrise to half an hour after sunset, 7 days a week.

**Dogs:** Must be leashed or under immediate voice & visual command at all times. Please clean up after your dog.

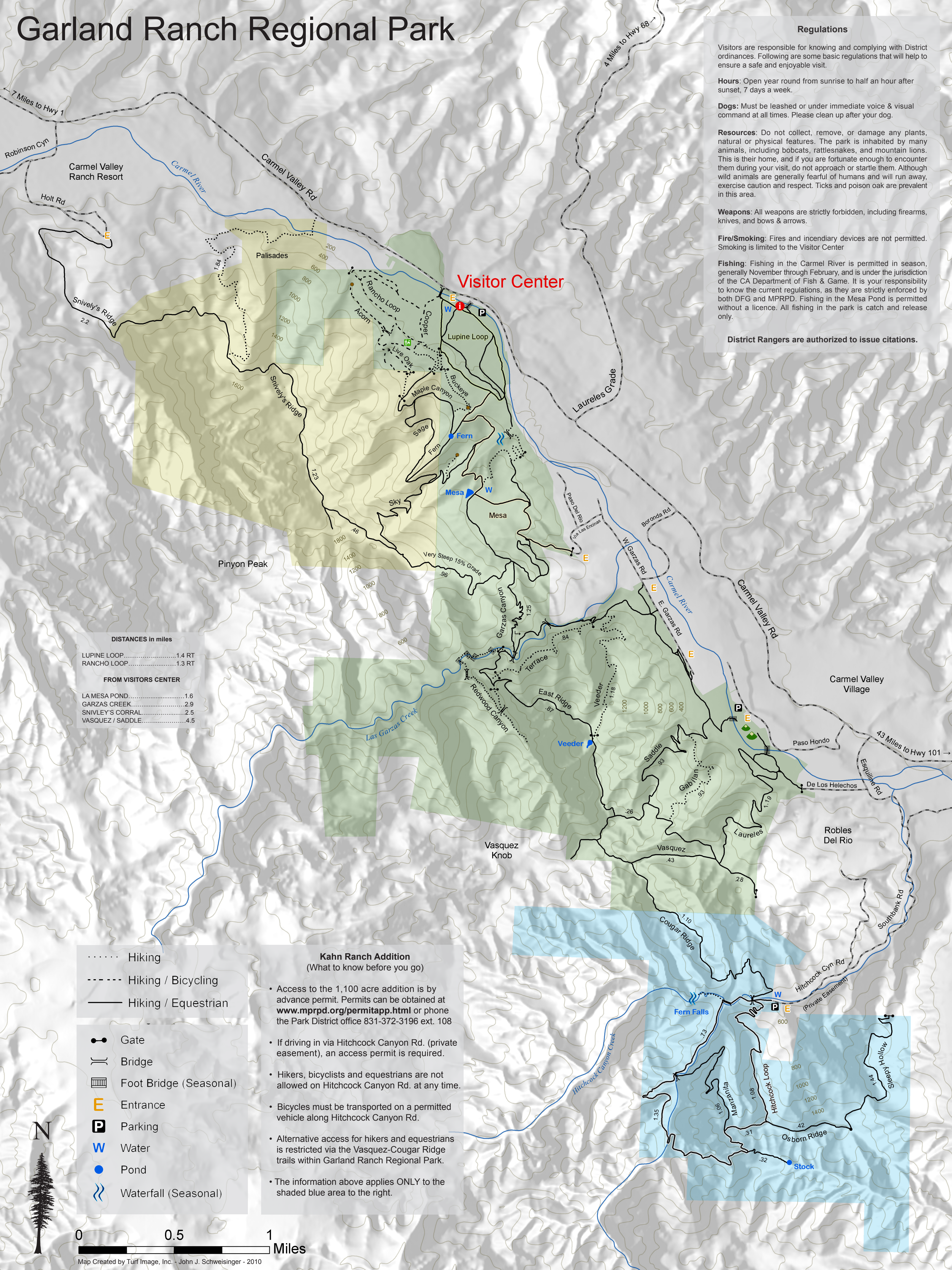
**Resources:** Do not collect, remove, or damage any plants, natural or physical features. The park is inhabited by many animals, including bobcats, rattlesnakes, and mountain lions. This is their home, and if you are fortunate enough to encounter them during your visit, do not approach or startle them. Although wild animals are generally fearful of humans and will run away, exercise caution and respect. Ticks and poison oak are prevalent in this area.

**Weapons:** All weapons are strictly forbidden, including firearms, knives, and bows & arrows.

**Fire/Smoking:** Fires and incendiary devices are not permitted. Smoking is limited to the Visitor Center

**Fishing:** Fishing in the Carmel River is permitted in season, generally November through February, and is under the jurisdiction of the CA Department of Fish & Game. It is your responsibility to know the current regulations, as they are strictly enforced by both DFG and MPRPD. Fishing in the Mesa Pond is permitted without a licence. All fishing in the park is catch and release only.

District Rangers are authorized to issue citations.



**DISTANCES in miles**

|                  |        |
|------------------|--------|
| LUPINE LOOP..... | 1.4 RT |
| RANCHO LOOP..... | 1.3 RT |

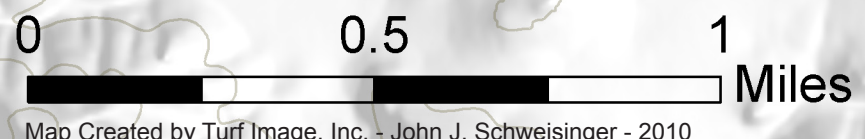
**FROM VISITORS CENTER**

|                       |     |
|-----------------------|-----|
| LA MESA POND.....     | 1.6 |
| GARZAS CREEK.....     | 2.9 |
| SNIVLEY'S CORRAL..... | 2.5 |
| VASQUEZ / SADDLE..... | 4.5 |

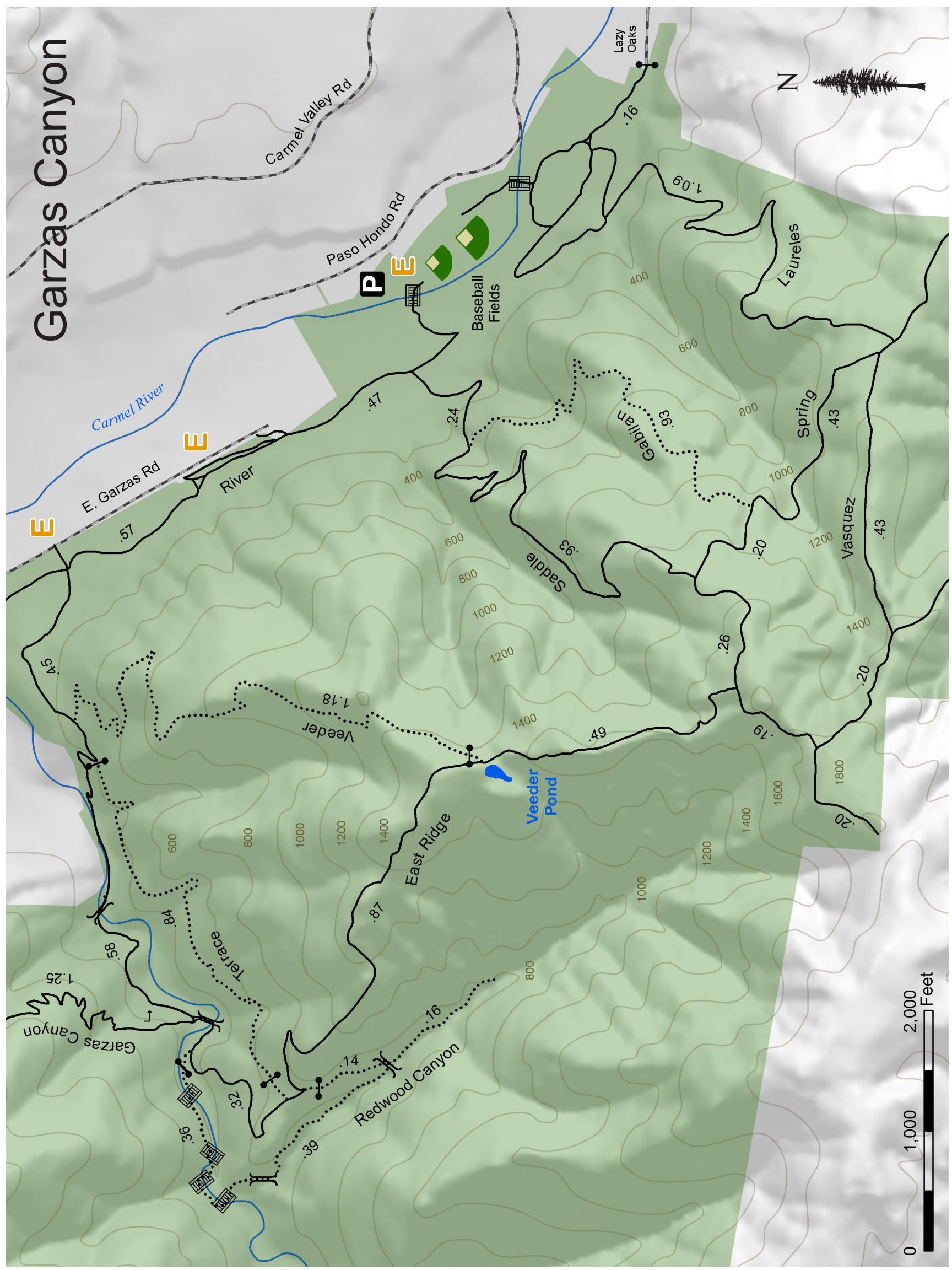
- ..... Hiking
- Hiking / Bicycling
- Hiking / Equestrian
- Gate
- ⌋ Bridge
- ▩ Foot Bridge (Seasonal)
- E Entrance
- P Parking
- W Water
- Pond
- ⋈ Waterfall (Seasonal)

**Kahn Ranch Addition**  
(What to know before you go)

- Access to the 1,100 acre addition is by advance permit. Permits can be obtained at [www.mprpd.org/permitapp.html](http://www.mprpd.org/permitapp.html) or phone the Park District office 831-372-3196 ext. 108
- If driving in via Hitchcock Canyon Rd. (private easement), an access permit is required.
- Hikers, bicyclists and equestrians are not allowed on Hitchcock Canyon Rd. at any time.
- Bicycles must be transported on a permitted vehicle along Hitchcock Canyon Rd.
- Alternative access for hikers and equestrians is restricted via the Vasquez-Cougar Ridge trails within Garland Ranch Regional Park.
- The information above applies ONLY to the shaded blue area to the right.



# Garzas Canyon



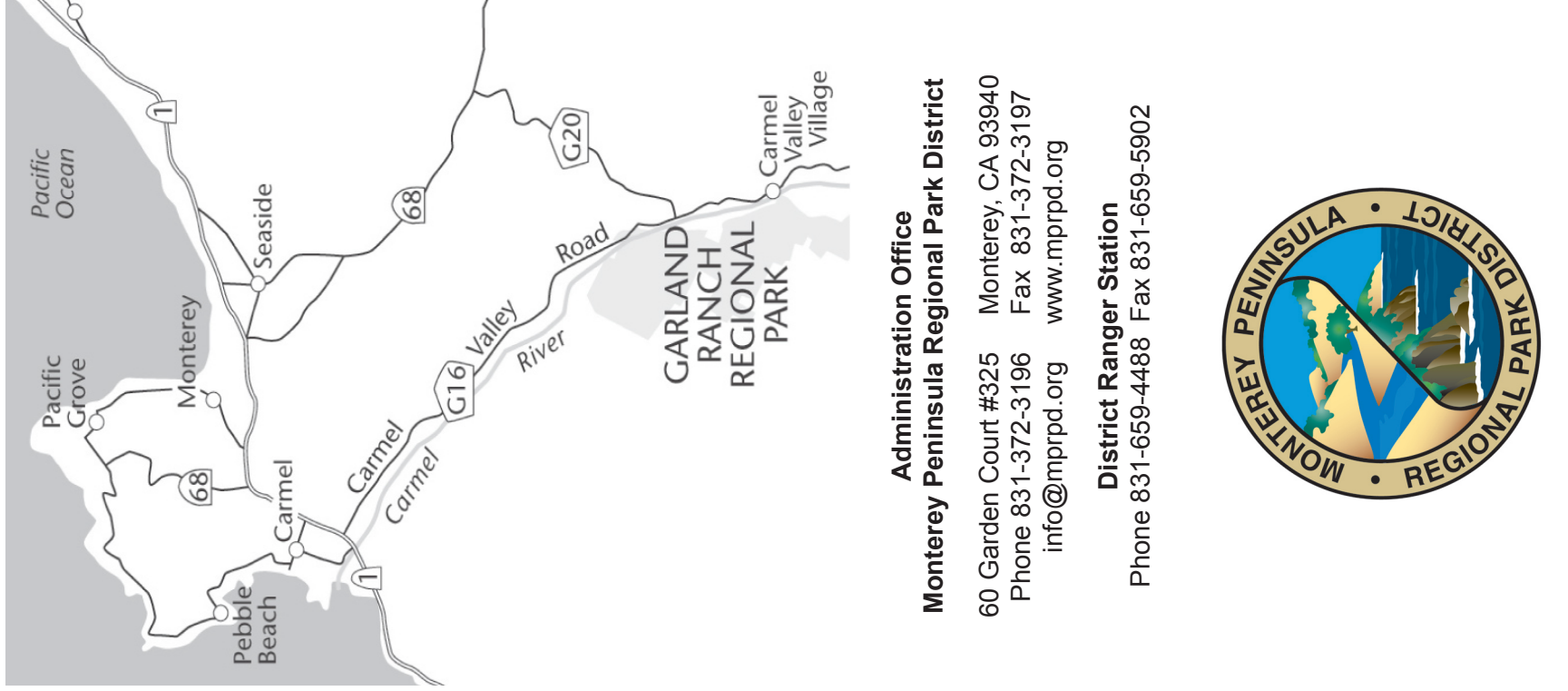
## General Information

Garland Ranch was established in December 1975 with the bargain-sale purchase of 540-acres from William Garland. He was a businessman from southern California who enjoyed the rural country-life of Carmel Valley and brought his family to his 'ranch' for weekend retreats and vacations. Shortly after the sale Mr. Garland was killed in a crash while flying up to Monterey. The park is named in his memory.

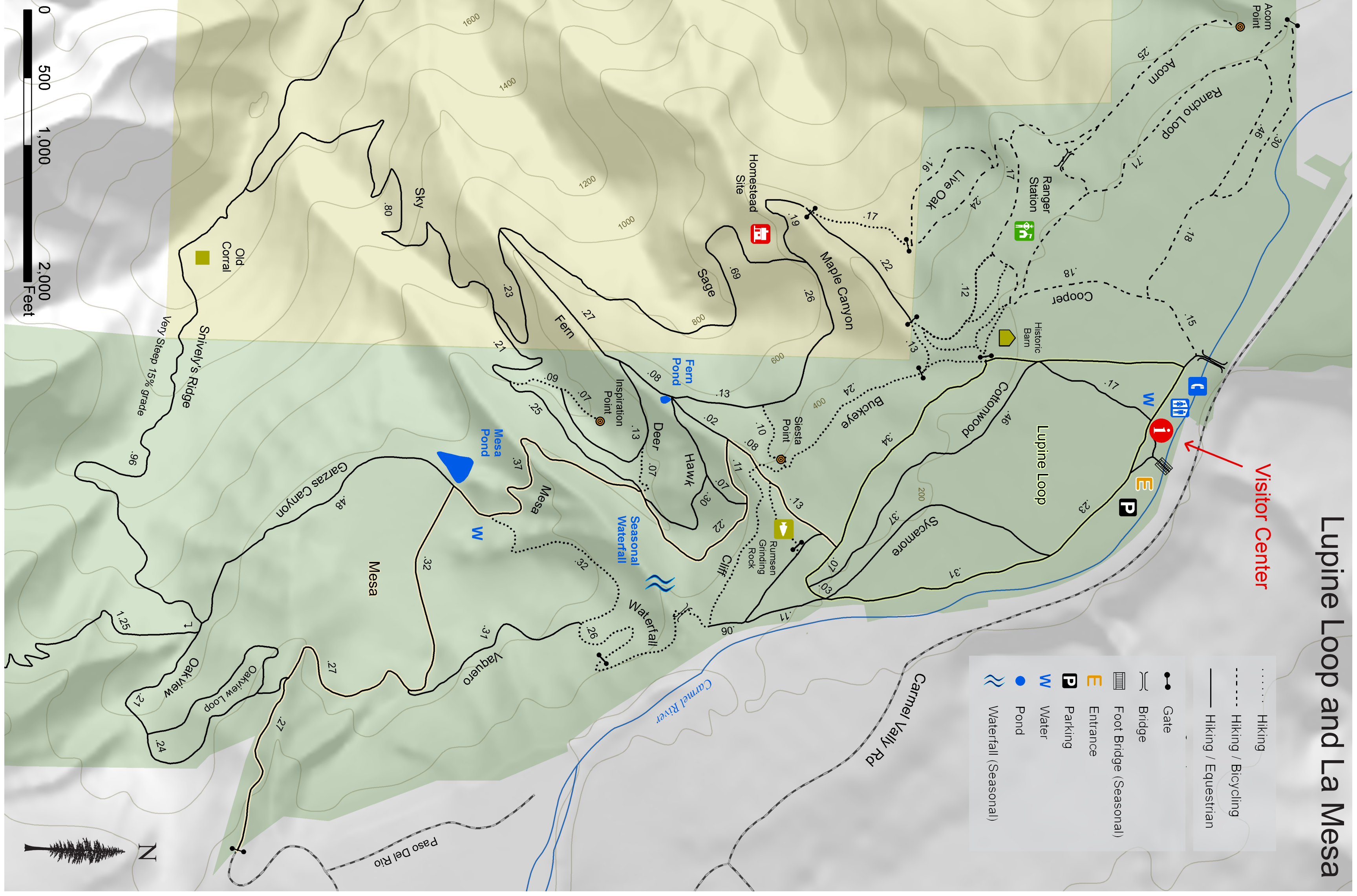
Since then, the District has actively enlarged the park with fee purchases, donations, and bargain sales. Today the park encompasses 3,464-acres and will continue to grow in the future. The park is characterized by a steep and rugged landscape that forms the northern tip of the Santa Lucia Range. It is home to a variety of habitats, from the riparian forest at 200' elevation along the Carmel River to the grasslands of Snively's Ridge at 2030'. With over 60 miles of trails and abundant sunshine most of the year, it is a favorite perennial hiking and equestrian destination for residents and visitors alike. Bicyclists are only permitted on the 144-acre Cooper Ranch addition west of Lupine Loop.

Throughout the park there are reminders of Carmel Valley's long and rich cultural history: Native Rumisen sites, farming and logging remains, hunting cabins and homestead ruins, livestock ponds and springs. Plant and animal diversity is also extensive and is well documented in the many brochures at the Garland Visitor Center. For a more formal introduction to the wonders of Garland Park, docent-led hikes are posted at the Visitor Center.

More information may be found at [www.mprpd.org](http://www.mprpd.org)



**Administration Office**  
**Monterey Peninsula Regional Park District**  
 60 Garden Court #325 Monterey, CA 93940  
 Phone 831-372-3196 Fax 831-372-3197  
[info@mprpd.org](mailto:info@mprpd.org) [www.mprpd.org](http://www.mprpd.org)  
**District Ranger Station**  
 Phone 831-659-4488 Fax 831-659-5902



# Lupine Loop and La Mesa

Visitor Center

- Hiking
- Hiking / Bicycling
- Hiking / Equestrian
- Gate
- Bridge
- Foot Bridge (Seasonal)
- Entrance
- Parking
- Water
- Pond
- Waterfall (Seasonal)