

**MONTEREY PENINSULA REGIONAL PARK DISTRICT
BOARD OF DIRECTORS MEETING**

DATE: June 03, 2020
TO: Board of Directors
FROM: Rafael Payan, General Manager
SUBJECT: Staff Reports

RECOMMENDED ACTION:

That the Board accept and file this report.

FISCAL IMPACT:

Not applicable. This report is for information only.

FUNDING SOURCE:

Not applicable.

FUNDING BALANCE:

Not applicable.

DISCUSSION:

The following summarizes some of the key tasks and projects MPRPD's personnel undertook from mid-April through the end of May 2020 in addition to performing the District's regular business. By concurrently providing this information to the Public and Board transparency is assured regarding these matters.

Staff reports are listed by Division in addition to a section that lists key collaborative efforts with other parties. Division Leads will gladly respond to the Board's questions.

I. ADMINISTRATION DIVISION

Actuarial Valuation: Completed work with actuary to obtain biennial actuarial valuation and the CalPERS CERBT program;

All-Staff Meeting: MPRPD has held All-Staff meetings for several years. The next All-Staff meeting is scheduled for Thursday, June 11, 2020. These meetings help update all Staff and seek input from the participants. The June meeting will focus on COVID-19, the County's latest Shelter-in-Place Order(s), and proposed processes for the reopening of District properties and facilities that have temporarily been closed;

Appraiser Services: Continued to work on obtaining an Appraiser for Sherar Property;

Auditing Services: Received and scored proposals for Auditing Services;

Ballot Measure 2021 - Exploratory Research: Staff spoke with several parties to explore the feasibility of a multijurisdictional park/open space-related Capital Improvement and Real Property Acquisition Ballot Measure that could be pursued as early as 2021. TBWB, the firm that helped MPRPD successfully pass Measure-E in 2016, was also contacted to vet this concept and obtain information.

The proposed ballot measure, if authorized by MPRPD's Board in the future, and if approved by voters, would serve as a regional financial stimulus program. Some economists estimate that for every construction job that is created or enhanced, up to eleven (11) other jobs are created, supported, or enhanced.

Multijurisdictional ballot measures have succeeded elsewhere. The reason being is that such initiatives "float all ships" within a given region. TBWB has informed MPRPD that:

- The most suitable instrument is a Community Facilities District (CFD), because Mello Roos Laws envision this kind of effort;
- CFD special taxes and bonds require 2/3 voter approval, and can take place at a general, primary, or special election;
- Per TBWB, "An example of a somewhat similar initiative is a Library Facilities Financing Authority Joint Use Agreement in Santa Cruz County. TBWB helped pass a special tax in 2016 to fund library improvements. This may be one version of a workable model."
- A legal opinion should be sought to discuss this proposed ballot initiative;

Board Meeting (Remote): Researched, planned, and launched MPRPD's "live remote" Board meetings via Zoom;

Budget 2020-12: Staff continued to develop the up-coming fiscal year's budget and will present it to the Board in June;

California Coastal Conservancy (SCC): MPRPD's Legal Counsel and Staff met with SCC to discuss next steps and the launch of the Rancho Canada Unit Habitat Restoration Plan project;

CalOES/FEMA Applications: Completed and transmitted required administrative forms to CalOES/FEMA for Request for Public Assistance (RPA) related to the possible reimbursement for funds expended by MPRPD in response to the COVID-19 pandemic;

Contract Amendments re: Time Extensions: As each fiscal year nears close-out, Staff reviews all contracts to determine if the work product under each agreement can realistically be completed within the remaining time (term) allotted to each contract. In compliance with MPRPD's policy and practice, Staff extends the term of those contracts that are nearing their term limits to ensure the required work is completed. These contract amendments solely award more time and specify the revised completion date. They do NOT affect or modify contract's scope or the Board-authorized budget under that contract. Accordingly, Staff is amending some of its agreements.

COVID 19-related Health and Safety Protocols for Construction Projects by MPRPD's Contractors: Legal Counsel and Staff researched and identified safety protocols applicable to contracted crews working on MPRPD capital improvement projects. The following is in addition to standard contract language that broadly obligates contractors to abide by all legally applicable rules, regulations, codes, standards, and orders:

- All managers and supervisors must be familiar with Protocols and be ready to answer questions from employees;
- Managers and supervisors must set a good example by following Protocols including, practicing good personal hygiene and jobsite safety practices;
- All employees are asked to help with transmission/contraction prevention efforts by adhering to various housekeeping, social distancing, and other best practices while at MPRPD's job sites;

Daily Meetings: Meetings include Admin., EECO, and Ops leadership. Meetings are held at 9am, weekdays, and as necessary during the weekends and Holidays;

Projects A & B: Continued to work with RGS Consulting on fee negotiations for these two Palo Corona Regional Park-Rancho Canada Unit projects. Scope items include design development and construction administration through construction completion;

Project A includes the proposed incident command center, Palo Corona Regional Park operations complex and equipment compound, and fenced off-leash dog park;

Project B includes a restroom building, orientation plaza, outdoor classroom, and other site improvements at the Rancho Canada Unit. These facilities will be constructed in proximity to the Port-a-Pottie's current location. This Project also includes the **ParkIT!** initiative's shuttle/school bus stop and a designated 25-car parking area. The extant parking area presently has 217 paved parking spaces. Signage is also included;

Strategic Plan 2020-2024: Staff continues to refine this plan and is in contact with the advisory consultant;

TRC Engineers: MPRPD's Board approved entering an agreement with this structural engineering/bridge specialist firm at the May meeting. The project has been launched;

Training:

- Government Accounting Series;
- Protocols for the Rabobank/Mechanics Bank merger;
- Numerous COVID-19 related training sessions with CalPERS and GFOA to discuss the novel coronavirus' impacts on MPRPD's current and future finances;
- Prevailing Wage Webinar Training hosted by California Labor Commissioner's Office & Center for Contract Compliance.

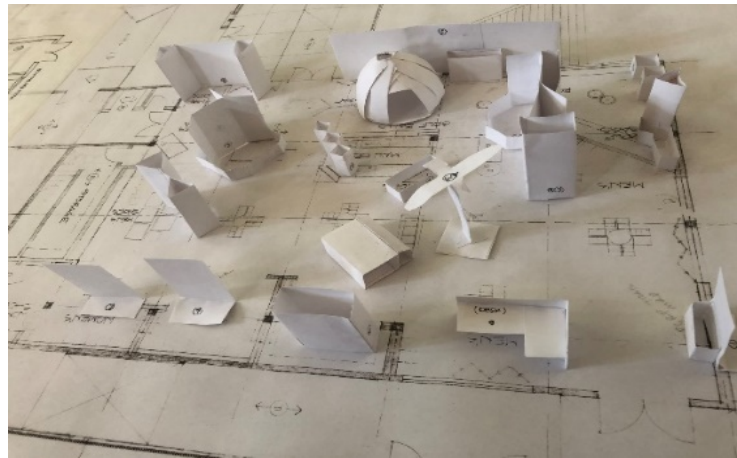
II. ENVIRONMENTAL EDUCATION & OUTREACH

COVID-19 Reopening Phase II Preparation: Drafted related processes;

Interpretation and Exhibits:

National Park Service consulted with MPRPD staff, providing valuable recommendations for finalizing the *Vision Statement* and *Profiles of Target Audiences* sections of the *Palo Corona Regional Park's Interpretive Plan*. This plan will help refine interpretive exhibit storyboards and museum circulation patterns. Topics include:

- California Condor;
- California Grizzly Bear;
- Carmel River Steelhead;
- Carmel River Watershed;
- PCRP Discovery Center exhibit placement and circulation patterns.



CONCEPT MASS-STUDY for PCRP DISCOVERY CENTER

Meetings and Communiques: Convened weekly meetings to review work projects, provided COVID-19 related updates, created outreach and media messaging, discussed volunteers' engagement, responded to public inquiries, and prepared for a phased re-opening of the PCRP Discovery Center and GRRP Visitor Center, and programs. Team members communicate daily. Email updates are issued regularly;

Outreach:

- **Social Media Campaign:** COVID-19 updates issued two to three times per week;
- **Assisted County of Monterey:** Staff issued an Eblast to over 5,400 patrons listed on MPRPD's *LGO!* mailing list, on the County's behalf, announcing the re-opening of several County parks and open spaces;

SERCAL Event Postponed: Given that it is very unlikely SERCAL can gather in large groups this fall, the event's promoters decided to "go virtual" for the 2020 SERCAL conference now rescheduled for September. In Spring 2021, if Shelter-in-Place orders have been lifted, SERCAL will try to hold the conference in Carmel Valley. SERCAL is coordinating the 2021 event with Wedgewood and MPRPD;

Signage Related to COVID-19 Orders: Ops and EECO divisions jointly design signage for all District Parks. Many of the highly visible signs were installed at park entrances, parking areas, trailheads, and key locations with messaging related to revised COVID-19 orders, CDC recommendations, park access, and, in some cases, temporary closures of some parks and facilities (**Attachment 1**);

Other jurisdictions requested copies of MPRPD’s messaging and signage to help guide development of their respective signs and messaging. Signs focused on the following:

- **Closures:** Facility and park closures in compliance with State and County orders, including: Cachagua and De Dampierre community parks, Marina Dunes Preserve, beaches along the Carmel River at Garland Ranch Regional Park, picnic areas at various parks, and PCRPD Discovery and GRRP Visitor centers;
- **Gathering:** Prohibition of gathering – especially amongst visitors not residing in the same household;
- **Masks:** Per the latest County Order, face coverings are recommended but NOT required for visitors;
- **Park Use Reminders:** Instruction on what activities are allowed AND prohibited;
- **Social Distancing:** Reminders to exercise personal responsibility in maintaining a minimum 6’-0” space between persons not residing in the same household;
- **Trail Etiquette:** Detailing how hikers, runners, mountain bikers, and equestrians should pass one another when on-trail or approaching a bridge;



Note: Please see **Attachment 1** for enlarged images.

Ventana Wildlife Society (VWS): VWS and MPRPD installed a “television” monitor at the PCRPD Discovery Center showing real-time action via a “Condor Cam.” The California Condor nest highlighted in this exhibit is in a Coastal Redwood tree in the Big Sur area. A chick was successfully hatched and was seen crawling about the nest and nuzzling its parents, beak-to-beak;

Volunteer Matters: Our highly valued Volunteers make up the largest percentage of the MPRPD Outreach and Stewardship Team. Their wellbeing is of utmost importance. During the Shelter-in-Place Order, Volunteers have greatly limited, if not foregone, MPRPD-related tasks that entail public contact.

The following includes recent Volunteer-related items:

- **Newsletter (April 2020):** The April Volunteer Newsletter was forwarded to all Volunteers, sharing valuable information, and creating a platform for Volunteers to provide feedback and enhance communication. An excerpt of that Newsletter is as follows:

“Not a day goes by that we do not find ourselves thinking about our Volunteers. We wonder how you are doing and how much we miss each one of you. ...We are looking for ways to stay engaged with you during this time of social distancing.”

- **Newsletter (June 2020):** Drafting underway;
- **Plant Test Plot:** In alignment with the latest Shelter-in-Place Order, Mr. Scott Hennessy, was authorized to work on the native plant test plot and pollinator garden project. Mr. Hennessy planted hundreds of locally sourced milkweed and tended to the test plot. Monarch Butterfly rely on native milkweed;
- **Recognition Celebration Postponed:** This annual event, typically combines a recognition celebration with an appreciation dinner. Unfortunately, the 2020 gala was postponed due to the COVID-19 pandemic. A new date has yet to be determined. In the event the celebration cannot physically be held, a remote celebration may take place. Staff is exploring the feasibility of having a meal-delivery service(s) deliver meals prepared by local restaurants to our Volunteers as part of this digital celebration. Most importantly, MPRPD is exceedingly grateful for the many hours, tasks, projects, research, leadership, expertise, and recommendations our Volunteers generously provide the District and its residents and visitors;
- **Reopening Protocols:** Staff updated the *Volunteer Handbook*, including *Protocols for the Reopening of Parks and Facilities*. These protocols will help MPRPD transition from Shelter-in-Place to the responsible re-opening of our Discovery and Visitor centers, and restart docent-led classes, programs, and hikes. Protocols are aligned with the CDC’s and the National Recreation and Parks Association’s recommendations and guidelines. Implementation and adherence to these organizations’ guidelines and the State’s and County’s orders is critical because some Volunteers and Staff are classified as “vulnerable”;

Wildflower Show June 13-14, 2020: A press release will announce that for the first time in the wildflower show's 21-year history, the event will enter the digital world (**ATTACHMENT 2**). The wildflower show may be viewed digitally from Saturday, June 6 through Sunday, June 21, 2020. The virtual show shall include photos of wildflowers found at MPRPD's parks and open spaces;

Youth Camps: Dr. Moreno – County of Monterey's Health Officer hosted a session regarding youth camps. Although MPRPD does NOT host youth camps, Staff participated to learn more about this topic and the County's Order related to this matter because CUSD has previously held summer day-camps at the Cachagua Neighborhood Park and Community Center.

III. OPERATIONS & MAINTENANCE

HEROS!: Alongside our nation's medical professionals, first responders, educators, and law enforcement, MPRPD's Rangers, Environmental Education and Outreach Team, and Administration Professionals are also heroes. Their efforts play an essential role in maintaining our communities' mental, emotional, and physical wellbeing.

Recognizing medical and scientific evidence that people benefit from access to open space, sunshine and fresh air, MPRPD's Staff strategically formulated and implemented several plans to responsibly keep many District properties open, inform the public, and ensure our business and mandated responsibilities functioned.

It took a great and well-executed effort to remain open while other properties in the region were temporarily shuttered. In compliance with the State's and County's orders, MPRPD's Rangers sought a balance between providing essential services to keep District properties open while protecting Staff from exposure to the novel coronavirus. Humbly stated, many jurisdictions adopted MPRPD's model when they reopened their parks and open spaces.

Each week brings a new set of challenges, be it a closure or planning for a site's reopening, addressing a significant increase in visitation and the need for additional signage, the enforcement of Shelter-in-Place orders, and maximizing our numerically-limited staffing number's productivity;

Increased Visitation: The temporary closure of many of the region's federal, state, regional, and local parks and open spaces resulted in a vast increase in the number of visitors frequenting MPRPD's properties.

Unfortunately, several MPRPD properties had to be closed due to some visitors not adhering to the County's mandated health orders, to protect critical habitat that supports listed and common aquatic, amphibian, and terrestrial species, and the need to consolidate our limited resources at those sites that have the greatest amount of use.

It is not yet possible to determine if post-pandemic visitation will return to pre-pandemic numbers, or whether visitation to District properties will reflect a new and likely increased level of usership. Once Shelter-in-Place orders have been lifted, Staff may survey our visitors to better understand the impacts, if any, COVID-19 has on post-pandemic visitation numbers, demographic change, and user preferences;

Interviews: Rangers appropriately became “the Face of MPRPD” on several broadcast interviews. In advance of most interviews, MPRPD contacted our partners (BLM, CSP, and County) to coordinate press releases, etc., so that no one was “blind-sighted.” Interviews stressed that for MPRPD to keep some of its sites open, visitors needed to help by complying with all Shelter-in-Place orders, and protecting our natural and cultural resources when visiting open spaces;

Mowing: Seasonal mowing, in advance of this year’s wildland fire season, has begun.

Park Security: Ops, Admin, and Legal Counsel worked together to determine what options were available to enhance MPRPD’s response to the tremendous increase in visitation at GRRP and other sites. Private and public security options were vetted. It was determined that the most feasible means -- with the least legal exposure – was/is for MPRPD’s Rangers to provide site security measures as best possible. The City of Marina’s Police Department and the County Sheriff’s Office have graciously provided drive-through security services to some District properties;

Seeds: One of MPRPD’s neighbors offered to collect native plant seeds on their property. These seeds will be shared with MPRPD to help advance the Rancho Canada Unit’s Habitat Restoration Project. The advantage to obtaining locally sourced seeds is maintaining genotypical integrity.

MEarth and MPRPD enjoy a strong cooperative relationship, benefiting children attending the Carmel Unified School District, the region’s communities, and MPRPD. Discussion has been underway for MEarth to propagate native plants that will be used for the Rancho Canada Unit’s Native Habitat Restoration Project. This collaborative partnership may serve as a national model worthy of replication and publication.

IV. MULTI-JURISDICTION COLLABORATION:

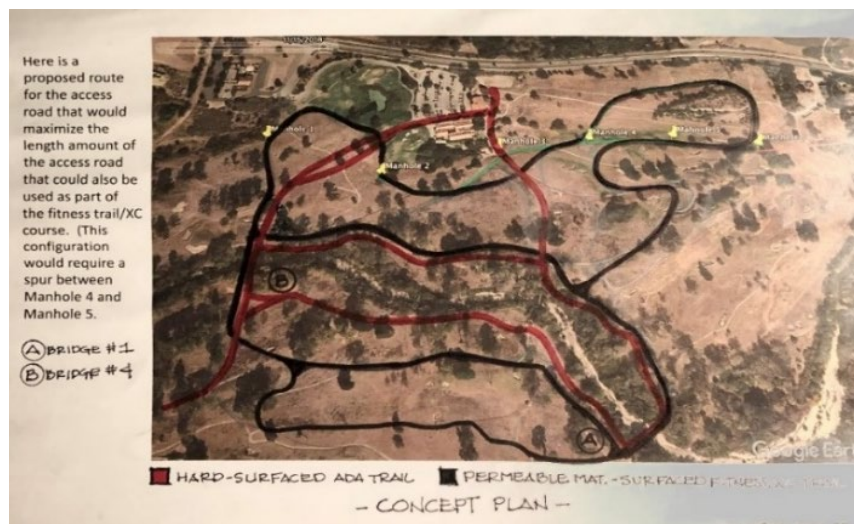
Big Sur International Marathon Foundation Fitness and Cross Country Course:

The Big Sur International Marathon Foundation (BSIMF), the Monterey Peninsula Regional Wastewater Management District (MPRWMD), and MPRPD are collaboratively designing the course’s alignment and will soon ground truth the routes (**Attachment 3**). BSIMF previously presented the idea of constructing this course at the Rancho Canada Unit to MPRPD’s Board. Foot races were included in the Palo Corona Regional Park’s General Development Plan and its environmental analysis. Footrace tournaments will replace the former golf course’s youth and adult golf tournaments as an authorized use for the site.

Because school districts and universities have cancelled this Fall's school-sponsored sports, the cross country course will not host any tournaments until 2021 assuming construction of the course is completed by then and orders are lifted. Thus far, the BSIMF, the MPRWMD, and other parties have articulated a commitment to underwrite the project's planning, design, and construction costs. BSIMF also continues to seek in-kind and cash donations related to the course's up-keep and other related costs. MPRPD does not propose any financial contribution.

MPRWMD will be installing a new sewer line and its service road in the very near future. These improvements will cross the park from its eastern to its western boundary. The sewer line project is a much-needed public works project that will replace and upgrade the extant sewer line. The proposed service road will provide access to manholes along the route. The BSIMF, MPRWMD and MPRPD coalition will leverage the fitness trail and cross country course's advancement by utilizing substantial portions of the proposed service road as part of the trail and course.

The final product will offer MPRPD's constituents a new trail route that replaces or parallels extant golf cart paths. The proposed "Class A" trail configuration allows our patrons to select between a hard-surfaced, soft-surfaced, or a combined trail experience. When not being used for cross country meets, which will be most of the time, the public will be able to use this course for hiking and exercise.



Concept Plan: Fitness Trail/Cross Country Course

In the initial concept plan, hard surfaced (concrete and asphalt) trails are shown in red. These, for the most part, are extant golf cart paths. Soft-surfaced trails (compacted decomposed granite or other stabilized permeable material) will constitute the Fitness/Cross Country trails. These are shown in black and will utilize the proposed sewer line service road alignment and may replace extant redundant golf cart paths;

CEMEX Boundary Fence Repaired: CEMEX has repaired a section of fence at the terminal point of Dunes Drive and posted NO TRESPASSING signs. This boundary fence was vandalized by visitors wanting to gain illegal entry to the Marina Dunes Preserve and CEMEX property – especially during the Preserve’s temporary closure;

CSUMB’s Return of the Natives (RON) and Marina Dunes Preserve: RON and MPRPD are seeking a grant that may help RON and MPRPD continue habitat restoration at Marina Dunes Preserve. RON was previously involved in the site’s restoration. The proposed project’s organizer recently stated that, “Upon completing recent restoration efforts in this State, I didn’t realize how well-preserved Marina Dunes is compared to other dune habitat in California.”

CUSD Potable Water Project at Cachagua Community Center and Park: CUSD and MPRPD have signed the Agreement between these parties. The project is underway.

FORA: Legal Counsel and Staff representing FORA/DoD, the cities of Seaside and Del Rey Oaks, various interested private parties, and MPRPD continue to be in communication regarding the potential transfer of approximately 6.9-acres of riparian and oak woodland habitat, from FORA and the successor agency (the City of Seaside) to MPRPD. This property is located east of MPRPD’s Frog Pond Reserve and General Jim Moore Blvd. The City of Del Rey Oaks also mentioned a desire to transfer other parcels in the immediate area to MPRPD.

The parcels are partially in the floodplain and slope conditions are not conducive for residential/light commercial/industrial development. Zoning challenges aside, engineering costs would be substantial. Because State and Federal listed species, including tiger salamander, red-legged frog, and other species of interest are found at this location, it is imperative that these parcels be protected. Acquisition will allow MPRPD to:

- Connect the proposed FORTAG route to Frog Pond via TAMC’s proposed tunnel under General Jim Moore Blvd. The proposed trail will be used by pedestrians, bicyclists, and MPRPD’s light service vehicles;
- Construct a park visitor vehicle parking area along South Boundary Road. This will allow MPRPD to abandon the parking area currently situated along HWY 218’s northern shoulder;
- Expand the footprint of native riparian and oak woodland habitats that would be restored or protected.

FORTAG TAMC and MPRPD Agreement: TAMC’s and MPRPD’s respective Legal Counsel and Staff continue to work towards the development of an agreement that meets the project’s goals while protecting MPRPD’s legal interests. Towards that end, Staff met on-site with FORTAG advocates and other jurisdictions’ representatives to evaluate the proposed trail corridor’s alignment options. Concept plans for various potential alignment alternatives are being developed. These will help inform MPRPD’s preferred Alternative. An agreement will be presented to MPRPD’s Board for its consideration as at the June Board meeting;

Joyce Steven Monterey Pine Preserve Sign: County and MPRPD Staff continue to work on this project. The construction permit, once obtained, allows the project to be constructed anytime within the succeeding 360-days. The goal is to fast-track construction;

Marina Dunes Preserve's Temporary Closure: Several City of Marina Officials, prospective community leaders, and MPRPD staff exchanged email and phone calls regarding the Preserve's temporary closure. Mr. Layne Long – City Manager, Marina, carefully reviewed all perspectives and determined that the Preserve's temporary closure was and continues to be defensible, responsible, and just. Per City Manager Long:

“I support Rafael's decision, and so there is no need to talk about having our police provide enforcement to open up the beach. The crowds will just be too large. It appears the appropriate time to consider opening up this access point will be when the State opens up the Marina and Fort Ord access points.”

The City of Marina, State Parks, CEMEX, and MPRPD will continue to communicate and endeavor to develop a unified plan to reopen various sites and entry points as appropriate;

Memorial Day Holiday Pilot Project: MPRPD's divisions formulated and implemented a plan to address the anticipated heavy use of District parks and open spaces, especially at Garland Ranch Regional Park -- MPRPD's most visited park.

Lessons learned during the Memorial Day Holiday weekend will help refine how MPRPD addresses large crowds in preparation of the Fourth of July and Labor Day holidays.

The Sheriff's Office has graciously provided drive-through monitoring of the GRRP and PCRPP parking areas;

Office Space Modification: Per the States' and County's orders, governmental agencies are provided the discretion to reasonably exceed or create additionally restrictive requirements. Staff continues to be in close contact with the County's OES and Health Officer as we formulate plans to move forward.

Workspace safety measures, include: Continue teleworking opportunities that do not negatively impact MPRPD's productivity, forego face-to-face meetings by using telephonic and digital platforms, physically modify workspaces through spatial layout and reconfiguration, install “sneeze-guards” between cubicles and at visitor orientation stations to protect staff and visitors, and other options;

ParkIT! Initiative: The coalition of not-for-profit, for-profit, and governmental entities continues to make progress. The project's goals include minimizing traffic congestion on Highway 1 in proximity to the Point Lobos State Reserve while enhancing access to

Point Lobos, San Jose Creek, Palo Corona Regional Park, and other natural and cultural attractions via a combination of remote parking areas and shuttle service. Proposed remote parking areas include State Park's Marathon Flats and MPRPD's Rancho Canada Unit in addition to other sites.

Various studies and plans are being formulated. One of those includes the integration of the Rancho Canada Unit's Project B with **ParkIT!** This collaboration will result in the development of a "staging area" that will benefit Palo Corona Regional Park and the **ParkIT!** initiative.

Project B proposes several new facilities and site improvements including, a school bus/shuttle bus staging/drop-off and orientation area, restroom building, signage, and the dedication of 25 extant parking spaces for **ParkIT!** The Rancho Canada Unit presently has a total of 217 parking spaces. MPRPD will negotiate with State Parks and other parties to share shuttle service-related revenues to offset maintenance costs for this parking/staging/orientation complex.

The **ParkIT!** coalition has also researched the formulation and implementation of reservation system options for the Point Lobos State Reserve. Options strictly align with the Reserve's carrying capacity. On May 28, 2020, the coalition met with Kathy Amann and Matt Bellah to discuss this matter. Kathy is CA State Park's Deputy Director of Park Operations, and Matt is the Central Division Chief.

Various grants are also being explored. Grants may support the research, planning and development of the **ParkIT!** shuttlebus staging area at Marathon Flats and other sites.

PCRP/RCU CEQA EIR Analysis: Staff provided responses to Hexagon Transportation Consultants, Inc., re: the *Palo Corona Regional Park Trip Generation Evaluation*, and to Rincon Consultants, Inc.'s inquiries related to the site's environmental review. MPRPD's Board will be provided the results of this analysis at a future Board meeting;

Pebble Beach Concours d'Elegance (Concours) 2020 Cancelled: Last August, the Rancho Canada Unit hosted a very slow-moving entourage of collector and classic vehicles that wove their way through the park's parking area after Wedgewood provided a "to-go" type breakfast.

This year's event has been cancelled due to the COVID-19 pandemic. Pebble Beach Company, Wedgewood and MPRPD are in communication regarding the return of the event to the Rancho Canada Unit on Thursday, August 12, 2021. The Concours is tentatively scheduled for that date and has made reservations for the entire parking area, most likely just for the morning. A fee has been, and will be, assessed for the use of this site for this event;

Roofing the Former Clubhouse: RGS Consulting, Wedgewood, and MPRPD discussed the proposed re-roofing project scope for the former clubhouse and golf cart barn. If Shelter-in-Place orders are not lifted this summer, it may be advantageous to

undertake this proposed project while those orders stand and prior to seasonal fall rains.

Several options will be explored, including:

- Obtaining a base bid that carefully salvages and reinstalls the existing clay tile roofing materials.
- Alternate bids that recommend other visually appropriate roofing materials that retain the building's mission revival architectural style may also be considered. The use of alternate materials will be subject to MPRPD's approval.
- The sequencing or phasing of the project will also be explored. This may be necessary due to the availability of funding and, in consideration of how the project will be implemented if the Shelter-in-Place orders are lifted and the site's use resumes. Through careful planning, reroofing can be accomplished even if the site's use resumes.

Staff may seek the Board's authorization to solicit bids at the June Board meeting;

San Jose Creek Trail (SJCT): MPRPD is developing trail maps for the SJCT. Palo Corona Regional Park's former ranch roads connect the Rancho Canada Unit to the SJCT. The Rancho Canada Unit shall be the SJCT's initial point of access.

Staff has notified the Big Sur Land Trust and State Parks that MPRPD has a strong interest in opening the SJCT for public use this summer or early fall.

MPRPD will keep our partners and neighbors informed. As previously reported, the Big Sur Land Trust, State Parks, MPRPD, and others collaborated in the development of a Draft Press Release which will be updated once the trail's grand-opening date is determined. The Board shall be provided a trail map and details regarding this matter as more information becomes available.

Trees of the Monterey Peninsula Regional Park District Parks - Copyright Transfer to MPRPD: Authors Michael Mitchell (former MPRPD Volunteer) and Albert Satterfield graciously transferred the book's copyright to MPRPD so that the District may reprint it, make it available in pdf form, or use it in whatever other manner MPRPD thinks fit. The book's main files have been converted to high quality pdf files for the purposes of printing.

ATTACHMENTS:

1. [COVID-19 Regulatory Signs](#)
2. [Wildflower Show Press Release](#)